



Technical Bulletin

(1005902 Rev. B)

April 16, 2007

Models Affected:

1003890 (20LC-THS-BD)
1004040 (20LC-THS-BD-A)
1004939 (20LC-THS-BH)
1004955 (20LC-THS-BD-B)

Model Serial Numbers:

142709, 142803, 142804, 142936, 143700-143707, 144186-144193, 144743-144746,
145038, 145039, 145357-145374, 145759-145761

Details:

Touch Screen Calibration Procedures

Component Part Numbers:

- 1.) 1004309 – 20” Capacitive Glass Touch Screen
- 2.) 1004310 – Capacitive Touch Screen Controller, Touch International
- 3.) 1004766 – 20.1” Capacitive Glass Touch Screen
- 4.) 1005962 – Capacitive Touch Screen Controller, 3M

Solution:

Calibrate the touchscreen.

Rework Instructions:

- 1.) Once Windows finishes booting, double click on the touch screen icon located in the lower right corner of the screen. (Figure 1)



Figure 1

- 2.) The **Device Pointer Properties** window will appear. (Figure 2)

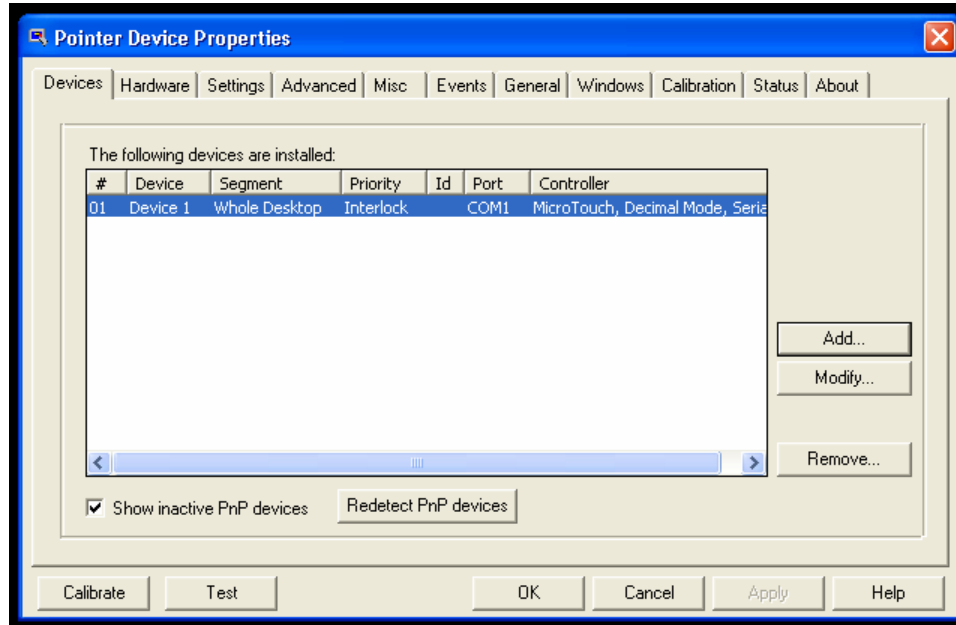


Figure 2

- 3.) Click on the **Calibration** tab. (Figure 3)

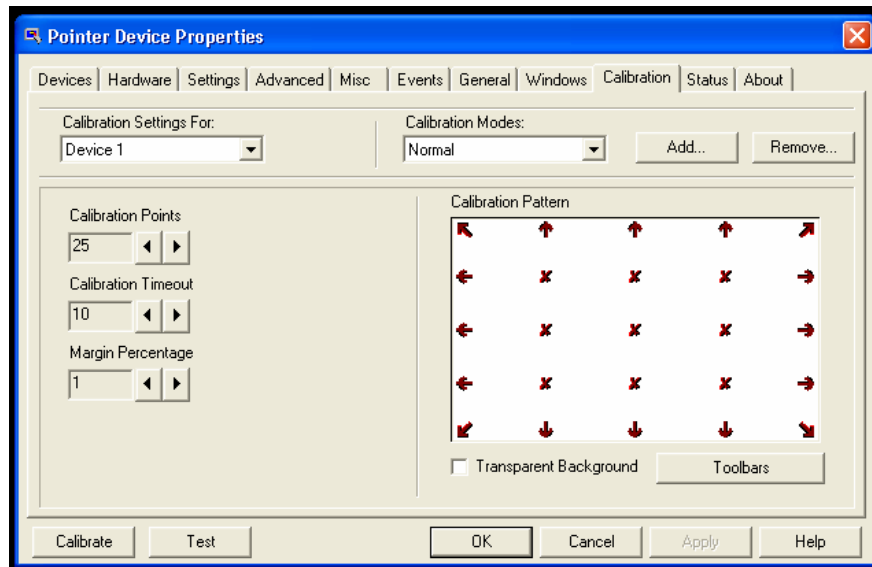


Figure 3

- 4.) Adjust the **Calibration Points** to 25 by clicking the right arrow.
5.) Adjust the **Margin Percentage** to 1 by clicking the left arrow.
6.) Click **Apply** in the lower right of the window to accept the changes.

- 7.) Click on **Calibrate** in the lower left to start the calibration process (Figure 4)

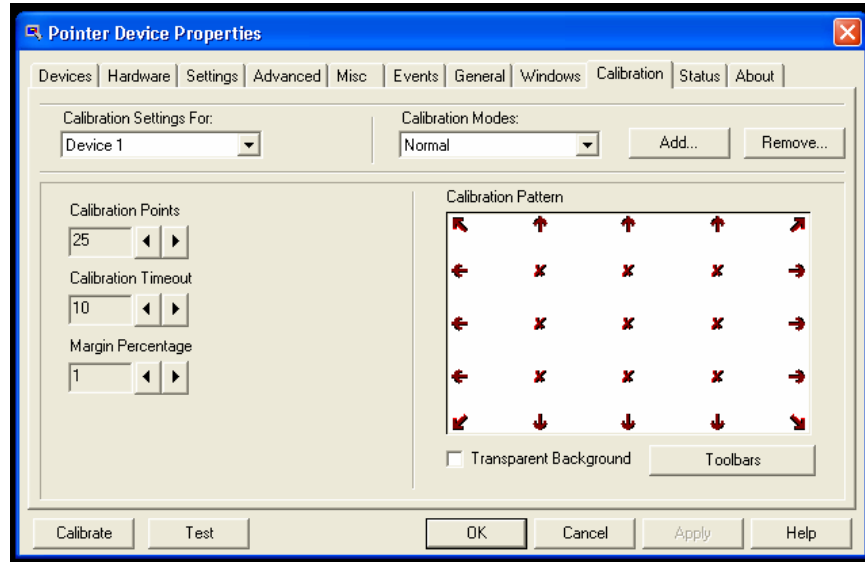


Figure 4

- 8.) The screen will turn white with an arrow at the first calibration point. Touch the screen where the arrow points to begin calibrating. (Figure 5)

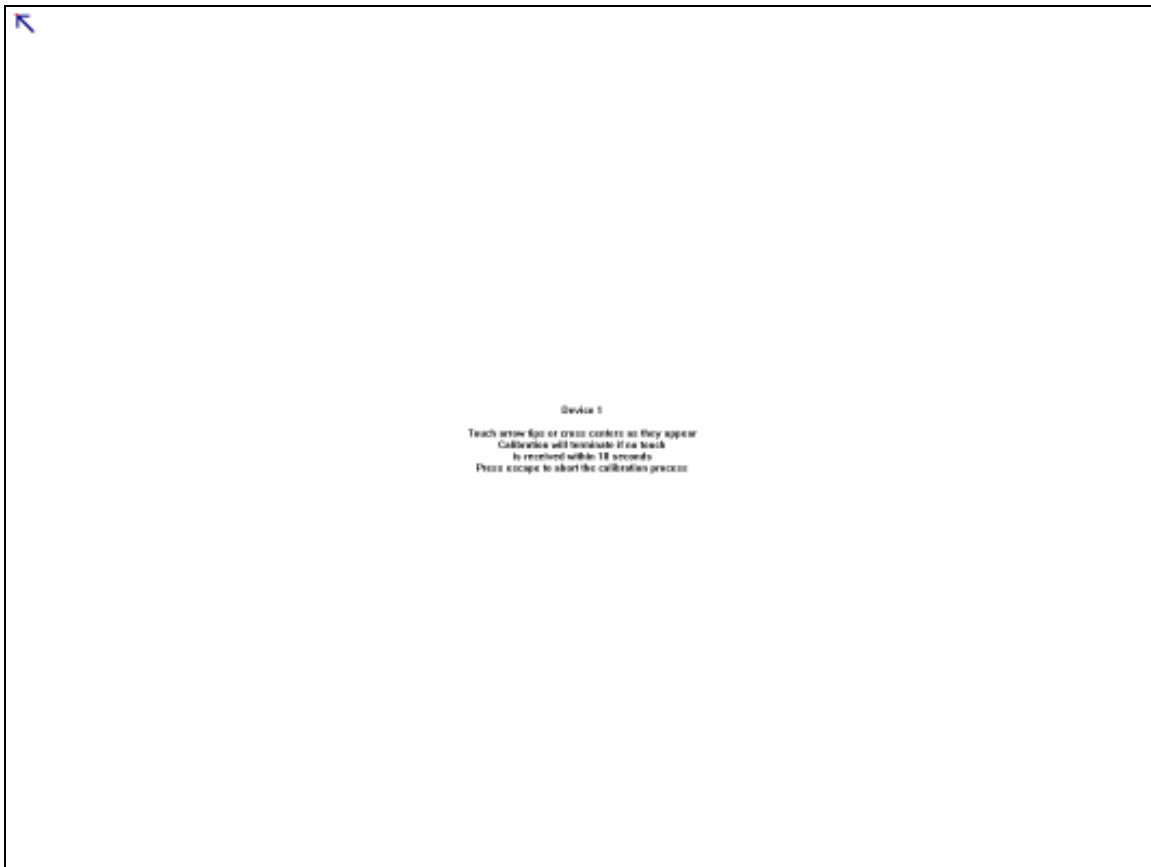


Figure 5

- 9.) Once the calibration is finished, click **OK** on the **Device Pointer Properties** window to close it. (Figure 6)

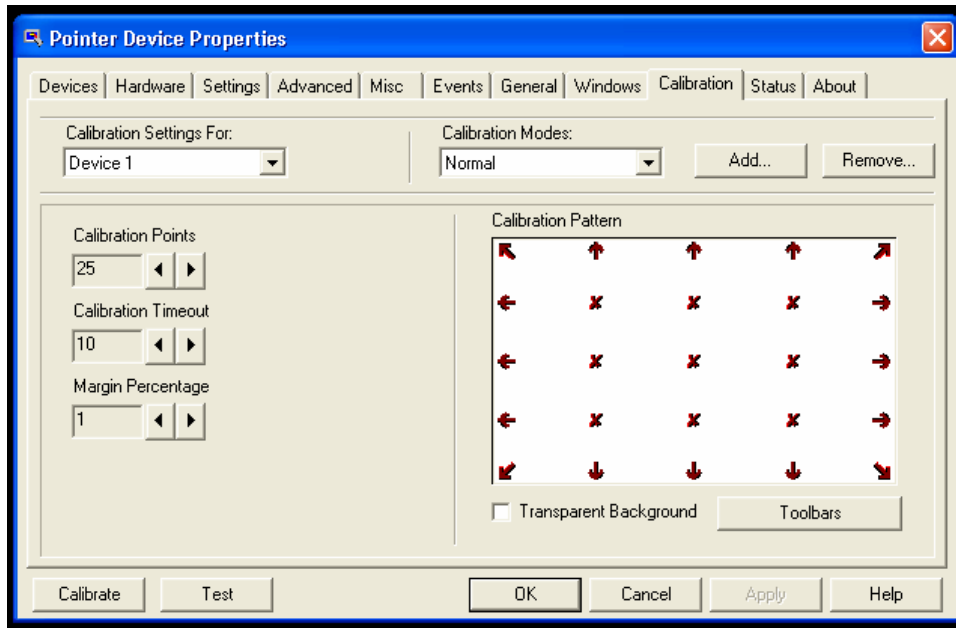


Figure 6